

```
joe@ubuntu-clone-2018:~$ sudo apt update^C
```

```
joe@ubuntu-clone-2018:~$ sudo apt install nfs-kernel-server3
```

```
joe@ubuntu-clone-2018:~$ sudo apt install nfs-kernel-server
```

```
joe@ubuntu-clone-2018:~$ cat /etc/exports
# /etc/exports: the access control list for filesystems which may be exported
#               to NFS clients.  See exports(5).
#
# Example for NFSv2 and NFSv3:
# /srv/homes          hostname1(rw,sync,no_subtree_check) hostname2(ro,sync,no_subt
ree_check)
#
# Example for NFSv4:
# /srv/nfs4           gss/krb5i(rw,sync,fsid=0,crossmnt,no_subtree_check)
# /srv/nfs4/homes    gss/krb5i(rw,sync,no_subtree_check)
#
/virtualmachines 144.38.193.230/26(rw,sync,no_subtree_check)
#/virtualmachines 10.150.40.0/24(rw,sync,no_subtree_check)

joe@ubuntu-clone-2018:~$
```

Navigator

- Host
 - Manage
 - Monitor
- Virtual Machines 3
 - qwerqwe
 - Monitor
 - More VMs...
- Storage 3
 - datastore1
 - Monitor
 - More storage...
- Networking 2

esxi-joe-1 - Storage

Datstores | Adapters | Devices

[New datastore](#) |
 [Increase capacity](#) |
 [Register a VM](#) |
 [Datastore browser](#) |
 [Refresh](#) |
 [Actions](#)

Name	Drive T...	Capacity	Provisio...	Free	Type	Thin pr...	Access
datastore1	Non-SSD	24.5 GB	2.08 GB	22.42 GB	VMFS5	Supported	Single
myfreenas	Unknown	94.44 GB	4.53 GB	89.91 GB	NFS	Supported	Single
netapp-iso	Unknown	5.7 TB	4.77 TB	951.28 GB	NFS	Supported	Single

3 items

Recent Tasks

Task	Target	Initiator	Queued	Started	Result	Completed
Acquire Cim Services Ticket	esxi-joe-1	VC Internal	09/05/2018 14:2...	09/05/2018 14:2...	✓ Completed successfully	09/05/2018 14:2...
Acquire Cim Services Ticket	esxi-joe-1	VC Internal	09/05/2018 14:2...	09/05/2018 14:2...	✓ Completed successfully	09/05/2018 14:2...

New datastore

- 1 Select creation type**
- 2 Provide NFS mount details
- 3 Ready to complete

Select creation type

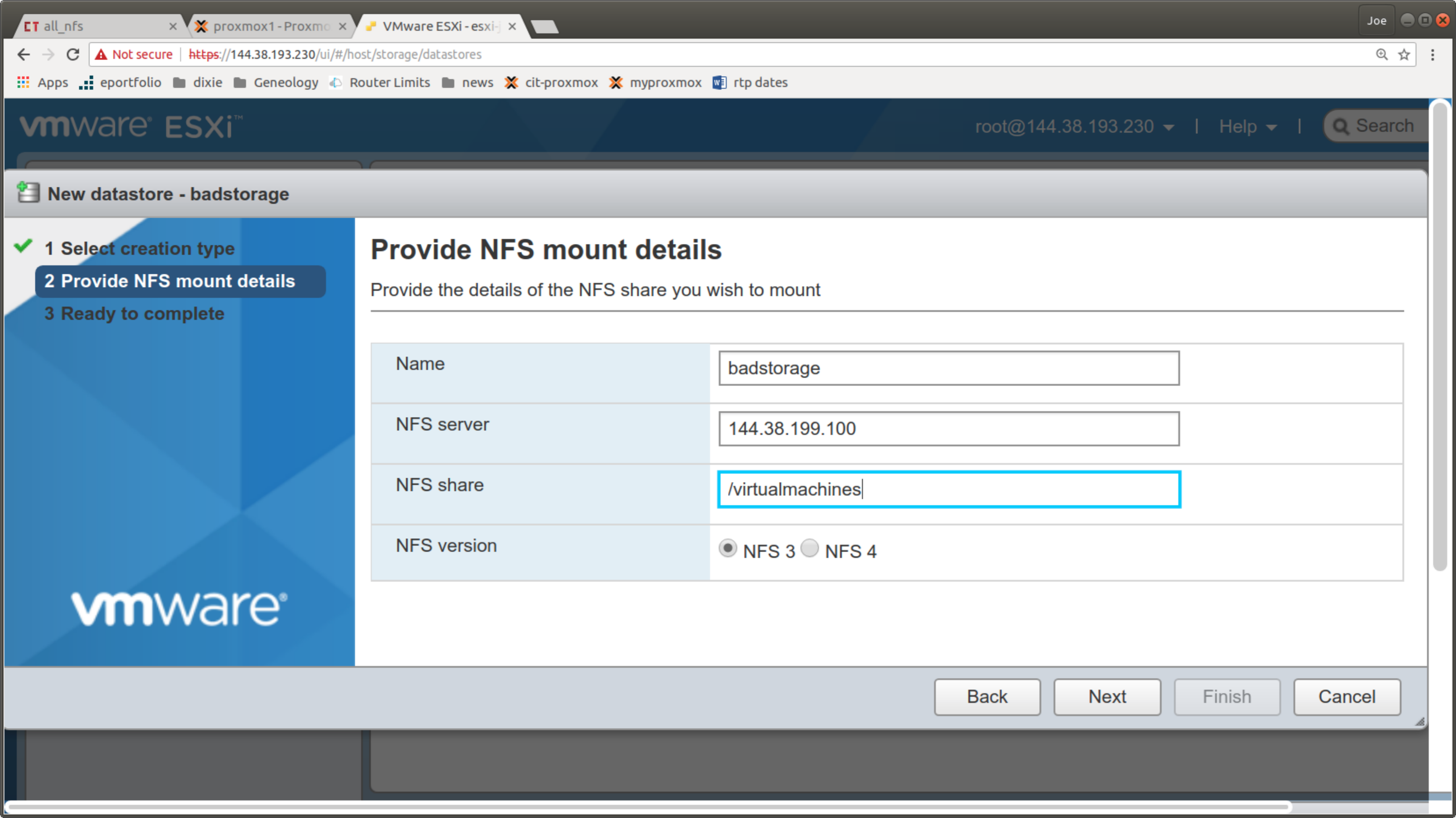
How would you like to create a datastore?

- Create new VMFS datastore
- Increase the size of an existing VMFS datastore
- Mount NFS datastore**

Create a new datastore by mounting a remote NFS volume

Back Next Finish Cancel

Acquire Cim Services Ticket	esxi-joe-1	VC Internal	09/05/2018 14:2...	09/05/2018 14:2...	✓ Completed successfully	09/05/2018 14:2...
Acquire Cim Services Ticket	esxi-joe-1	VC Internal	09/05/2018 14:2...	09/05/2018 14:2...	✓ Completed successfully	09/05/2018 14:2...



New datastore - badstorage

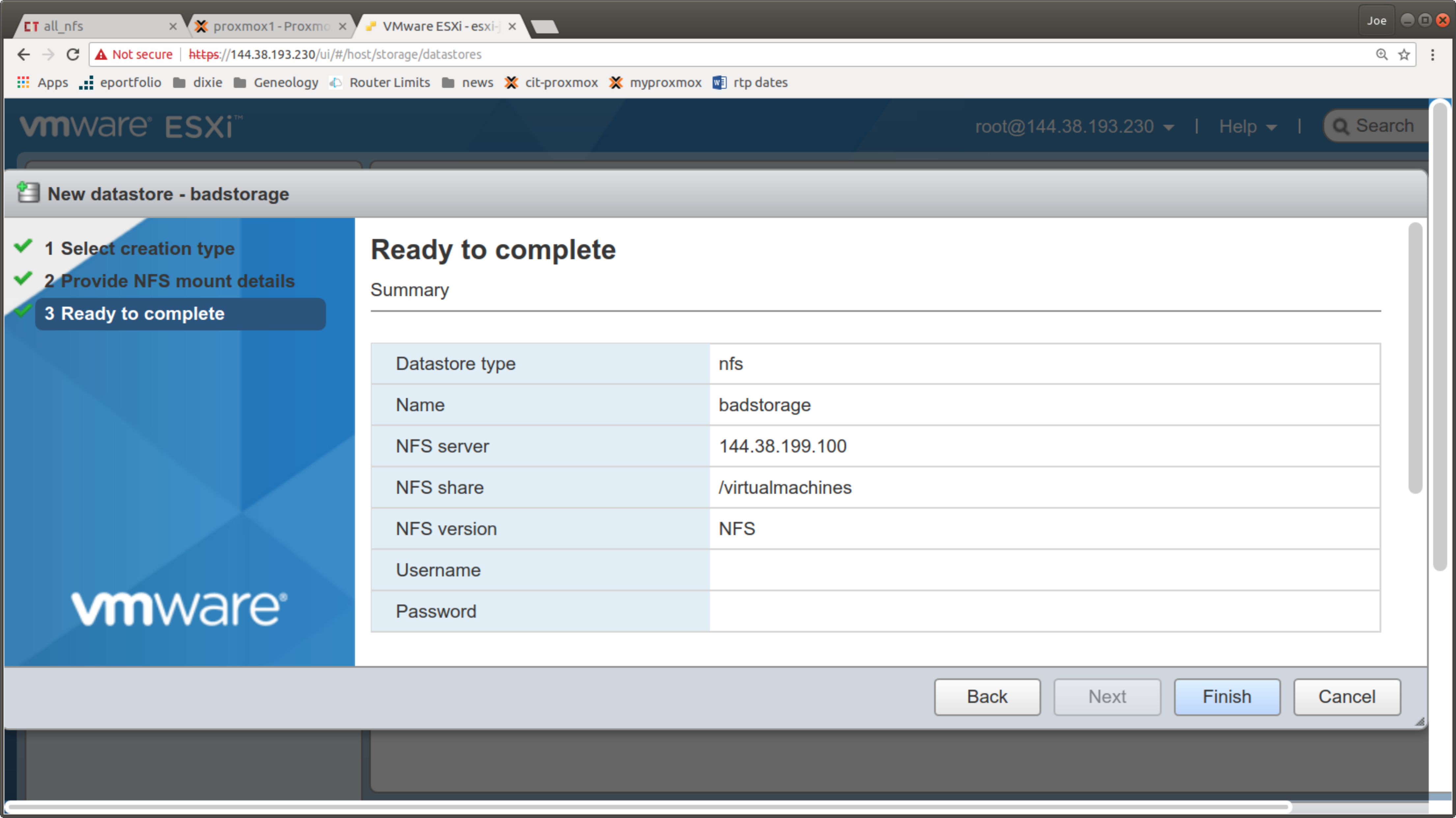
- 1 Select creation type
- 2 Provide NFS mount details**
- 3 Ready to complete

Provide NFS mount details

Provide the details of the NFS share you wish to mount

Name	<input type="text" value="badstorage"/>
NFS server	<input type="text" value="144.38.199.100"/>
NFS share	<input type="text" value="/virtualmachines"/>
NFS version	<input checked="" type="radio"/> NFS 3 <input type="radio"/> NFS 4





New datastore - badstorage

- ✓ 1 Select creation type
- ✓ 2 Provide NFS mount details
- ✓ 3 Ready to complete

Ready to complete

Summary

Datastore type	nfs
Name	badstorage
NFS server	144.38.199.100
NFS share	/virtualmachines
NFS version	NFS
Username	
Password	

