

vmware vSphere Web Client

Updated at 4:58 PM | Administrator@JOE.LOCAL | Help | Search

Navigator

vCenter Inventory ...

Datacenters 1

Datacenters

Objects

Actions

Name	VMs
joes-datacenter	7

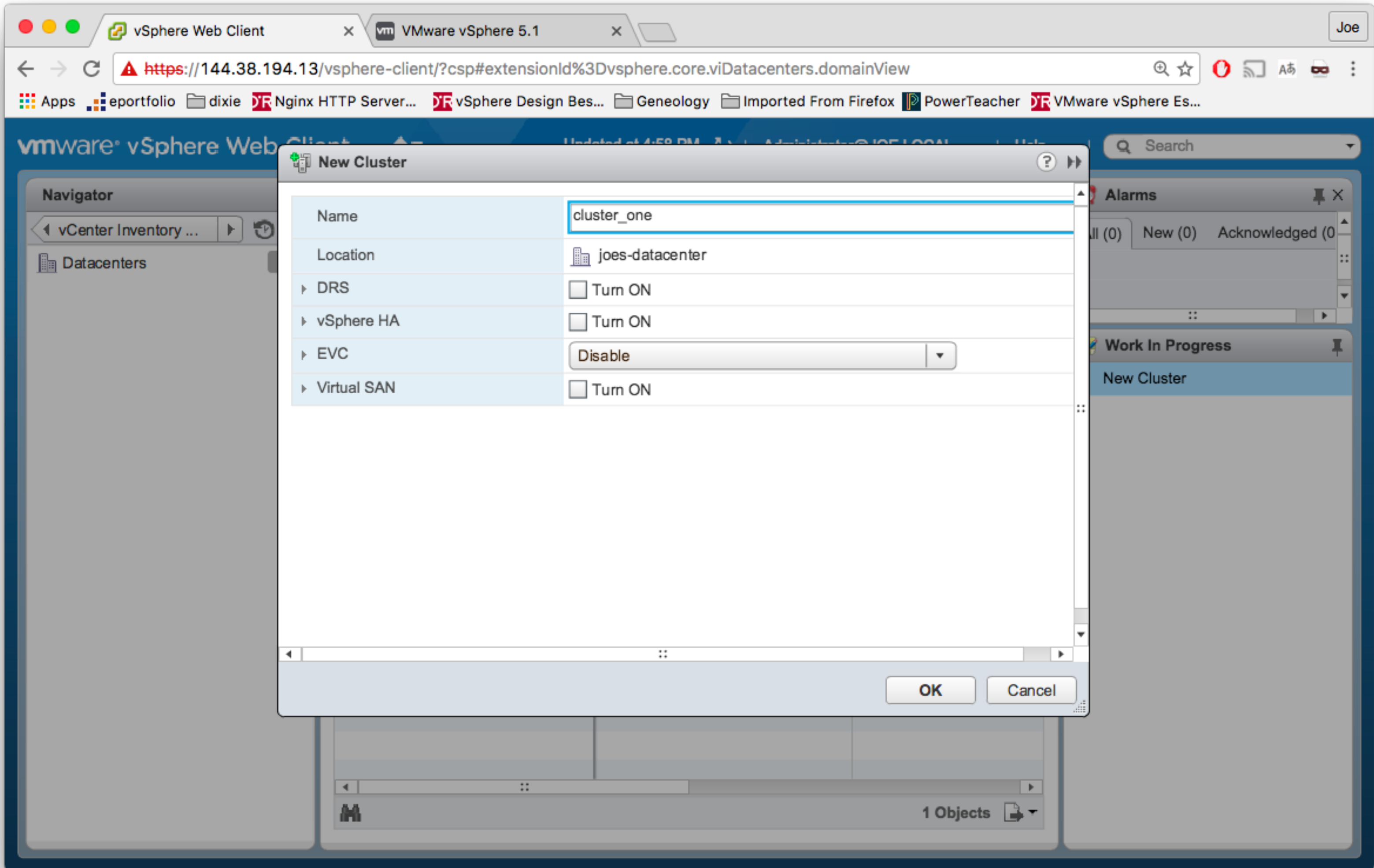
Create a new cluster

Alarms

All (0) New (0) Acknowledged (0)

Work In Progress

1 Objects



vmware vSphere Web Client Updated at 5:16 PM | Administrator@JOE.LOCAL | Help | Search

Navigator

Datcenters

joes-datacenter

- Top Level Objects 16
- Clusters 1**
- Hosts 2
- Virtual Machines 7
- VM Templates in Fol... 0
- vApps 0
- Datastores 5
- Datastore Clusters 0
- Networks 1
- Distributed Switches 0

Clusters

- cluster_one**

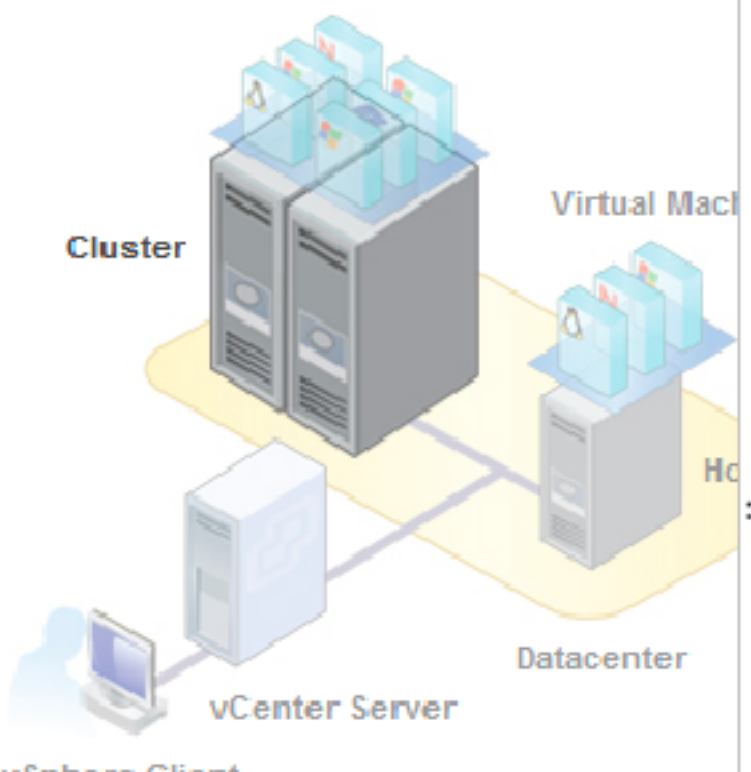
cluster_one Actions

Getting Started Summary Monitor Manage Related Objects

What is a Cluster?

A cluster is a group of hosts. When you add a host to a cluster, the host's resources become a part of the cluster's resources. The cluster manages the resources of all hosts within it.

Clusters enable the vSphere High Availability (HA), the vSphere Distributed Resource Scheduler (DRS), and the Virtual SAN (VSAN) solutions.



Basic Tasks

- [Add a host](#)
- [Create a new virtual machine](#)

Explore Further

- [Learn more about clusters](#)
- [Learn more about resource p...](#)

Alarms

All (0) New (0) Acknowledged (0)

Work In Progress

vmware vSphere Web Client Updated at 5:16 PM | Administrator@JOE.LOCAL | Help | Search

Navigator

Datcenters

joes-datacenter

- Top Level Objects 16
- Clusters 1**
- Hosts 2
- Virtual Machines 7
- VM Templates in Fol... 0
- vApps 0
- Datastores 5
- Datastore Clusters 0
- Networks 1
- Distributed Switches 0

Clusters

- cluster_one**

cluster_one Actions

Getting Started Summary Monitor Manage Related Objects

What is a Cluster?

A cluster is a group of hosts. When you add a host to a cluster, the host's resources become a part of the cluster's resources. The cluster manages the resources of all hosts within it.

Clusters enable the vSphere High Availability (HA), the vSphere Distributed Resource Scheduler (DRS), and the Virtual SAN (VSAN) solutions.

The diagram illustrates the vSphere architecture. A vSphere Client is connected to a vCenter Server. The vCenter Server manages a Cluster of hosts and Virtual Machines within a Datacenter. The Cluster is shown as a group of hosts, and the Virtual Machines are shown as blue blocks on top of the hosts. The vCenter Server is shown as a server rack connected to the Cluster. The Datacenter is shown as a yellow floor with the Cluster and Virtual Machines on it.

Basic Tasks

- [Add a host](#)
- [Create a virtual machine](#)

Explore Further

- [Learn more about clusters](#)
- [Learn more about resource p...](#)

Alarms

All (0) New (0) Acknowledged (0)

Work In Progress

vmware vSphere Web Client | VMware vSphere 5.1 | Joe

https://144.38.194.13/vsphere-client/?csp#extensionId%3Dvsphere.core.datacenter.gettingStarted%3Bcontext%3Dcom.vmware...

Apps | eportfolio | dixie | Nginx HTTP Server... | vSphere Design Bes... | Geneology | Imported From Firefox | PowerTeacher | VMware vSphere Es...

Add Host

1 Name and location

2 Connection settings

3 Host summary

4 Ready to complete

Enter the name or IP address of the host to add to vCenter Server.

Host name or IP address:

Location:

Type: ⓘ

Back Next Finish Cancel

vsphere Web Client VMware vSphere 5.1 Joe

https://144.38.194.13/vsphere-client/?csp#extensionId%3Dvsphere.core.datacenter.gettingStarted%3Bcontext%3Dcom.vmware...

Apps eportfolio dixie Nginx HTTP Server... vSphere Design Bes... Geneology Imported From Firefox PowerTeacher VMware vSphere Es...

Add Host

- 1 Name and location
- 2 Connection settings**
- 3 Host summary
- 4 Ready to complete

Enter the administrative account information for the host. The vSphere Web Client will use this information to connect to the host and establish a permanent account for its operations.

User name:

Password:

Back Next Finish Cancel

vmware vSphere Web Client

VMware vSphere 5.1

Joe

https://144.38.194.13/vsphere-client/?csp#extensionId%3Dvsphere.core.datacenter.gettingStarted%3Bcontext%3Dcom.vmware...

Apps eportfolio dixie Nginx HTTP Server... vSphere Design Bes... Geneology Imported From Firefox PowerTeacher VMware vSphere Es...

Add Host

- 1 Name and location
- 2 Connection settings
- 3 Host summary**
- 4 Assign license
- 5 Lockdown mode
- 6 Ready to complete

Name	144.38.194.2
Vendor	Supermicro
Model	X9SCL/X9SCM
Version	VMware ESXi 6.0.0 build-3620759

Virtual Machines

- Windows10 Sample
- asdf
- ub2
- parrot
- asdfa

Back Next Finish Cancel

vSphere Web Client | VMware vSphere 5.1 | Joe

https://144.38.194.13/vsphere-client/?csp#extensionId%3Dvsphere.core.datacenter.gettingStarted%3Bcontext%3Dcom.vmware...

Apps | eportfolio | dixie | Nginx HTTP Server... | vSphere Design Bes... | Geneology | Imported From Firefox | PowerTeacher | VMware vSphere Es...

Add Host

- 1 Name and location
- 2 Connection settings
- 3 Host summary
- 4 Assign license**
- 5 Lockdown mode
- 6 Ready to complete

Licenses

Filter

	License	License Key	Product	Usage	Capac...
<input checked="" type="radio"/>	➔ Evaluation License	--	--	--	--
<input type="radio"/>					
<input type="radio"/>					
<input type="radio"/>					
<input type="radio"/>					
<input type="radio"/>					
<input type="radio"/>					
<input type="radio"/>					
<input type="radio"/>					
<input type="radio"/>					

1 items

Assignment Validation for Evaluation License

The license expires in 52 days.

Back Next Finish Cancel

vsphere Web Client VMware vSphere 5.1 Joe

https://144.38.194.13/vsphere-client/?csp#extensionId%3Dvsphere.core.datacenter.gettingStarted%3Bcontext%3Dcom.vmware...

Apps eportfolio dixie Nginx HTTP Server... vSphere Design Bes... Geneology Imported From Firefox PowerTeacher VMware vSphere Es...

Add Host

- 1 Name and location
- 2 Connection settings
- 3 Host summary
- 4 Assign license
- 5 Lockdown mode**
- 6 Ready to complete

When enabled, lockdown mode prevents remote users from logging directly into this host. The host will only be accessible through local console or an authorized centralized management application.

If you are unsure what to do, leave lockdown mode disabled. You can configure lockdown mode later by editing Security Profile in host settings.

Disabled

Normal
The host is accessible only through the local console or vCenter Server.

Strict
The host is accessible only through vCenter Server. The Direct Console UI service is stopped.

Back Next Finish Cancel

vmware vSphere Web Client | VMware vSphere 5.1 | Joe

https://144.38.194.13/vsphere-client/?csp#extensionId%3Dvsphere.core.datacenter.gettingStarted%3Bcontext%3Dcom.vmware...

Apps | eportfolio | dixie | Nginx HTTP Server... | vSphere Design Bes... | Geneology | Imported From Firefox | PowerTeacher | VMware vSphere Es...

Add Host

- ✓ 1 Name and location
- ✓ 2 Connection settings
- ✓ 3 Host summary
- ✓ 4 Assign license
- ✓ 5 Lockdown mode
- ✓ 6 Ready to complete

Name	144.38.194.2
Version	VMware ESXi 6.0.0 build-3620759
License	Evaluation License
Networks	VM Network
Datastores	datastore1 joesnfs nfs-iso foorepo
Lockdown mode	Disabled

Back | Next | Finish | Cancel