

Not secure | jproxmox1.cs.dixie.edu:8006/?console=kvm&novnc=1&vmid=107&vmname=ubuntu-nfs&node=jproxmo...

joe@ubuntu-base: ~\$

Not secure | jproxmox1.cs.dixie.edu:8006/?console=kvm&novnc=1&vmid=107&vmname=ubuntu-nfs&node=jproxmo...

```
joe@ubuntu-base:~$ sudo apt install nfs-kernel-server _
```

Not secure | jproxmox1.cs.dixie.edu:8006/?console=kvm&novnc=1&vmid=107&vmname=ubuntu-nfs&node=jproxmo...

```
joe@ubuntu-base:~$ echo "make the dirs you want to share out via nfs"  
make the dirs you want to share out via nfs  
joe@ubuntu-base:~$ _
```

Not secure | jproxmox1.cs.dixie.edu:8006/?console=kvm&novnc=1&vmid=107&vmname=ubuntu-nfs&node=jproxmo...

```
joe@ubuntu-base:~$ echo "make the dirs you want to share out via nfs"
make the dirs you want to share out via nfs
joe@ubuntu-base:~$ mkdir /joeshare
mkdir: cannot create directory /joeshare: Permission denied
joe@ubuntu-base:~$ sudo mkdir /joeshare
joe@ubuntu-base:~$
```

Not secure | jproxmox1.cs.dixie.edu:8006/?console=kvm&novnc=1&vmid=107&vmname=ubuntu-nfs&node=jproxmo...

```
joe@ubuntu-base:~$ echo "set easy permissions"  
set easy permissions  
joe@ubuntu-base:~$ sudo chmod 777 /joeshare/  
joe@ubuntu-base:~$ _
```

Not secure | jproxmox1.cs.dixie.edu:8006/?console=kvm&novnc=1&vmid=107&vmname=ubuntu-nfs&node=jproxmo...

```
joe@ubuntu-base:~$ echo "edit exports file that controls who can access via nfs"  
edit exports file that controls who can access via nfs  
joe@ubuntu-base:~$ sudo vi /etc/exports
```



Not secure | jproxmox1.cs.dixie.edu:8006/?console=kvm&novnc=1&vmid=107&vmname=ubuntu-nfs&node=jproxmo...

```
## /etc/exports: the access control list for filesystems which may be exported
## to NFS clients. See exports(5).
##
## Example for NFSv2 and NFSv3:
## /srv/homes hostname1(rw,sync,no_subtree_check) hostname2(ro,sync,no_subtree_check)
##
## Example for NFSv4:
## /srv/nfs4 gss/krb5i(rw,sync,fsid=0,crossmnt,no_subtree_check)
## /srv/nfs4/homes gss/krb5i(rw,sync,no_subtree_check)
##
/joeshare 144.38.193.193/26(rw,sync,no_subtree_check)
##You would want to put your ip network there, probably something like 10.150.75.0/24
```

"/etc/exports" 13 lines, 537 characters written

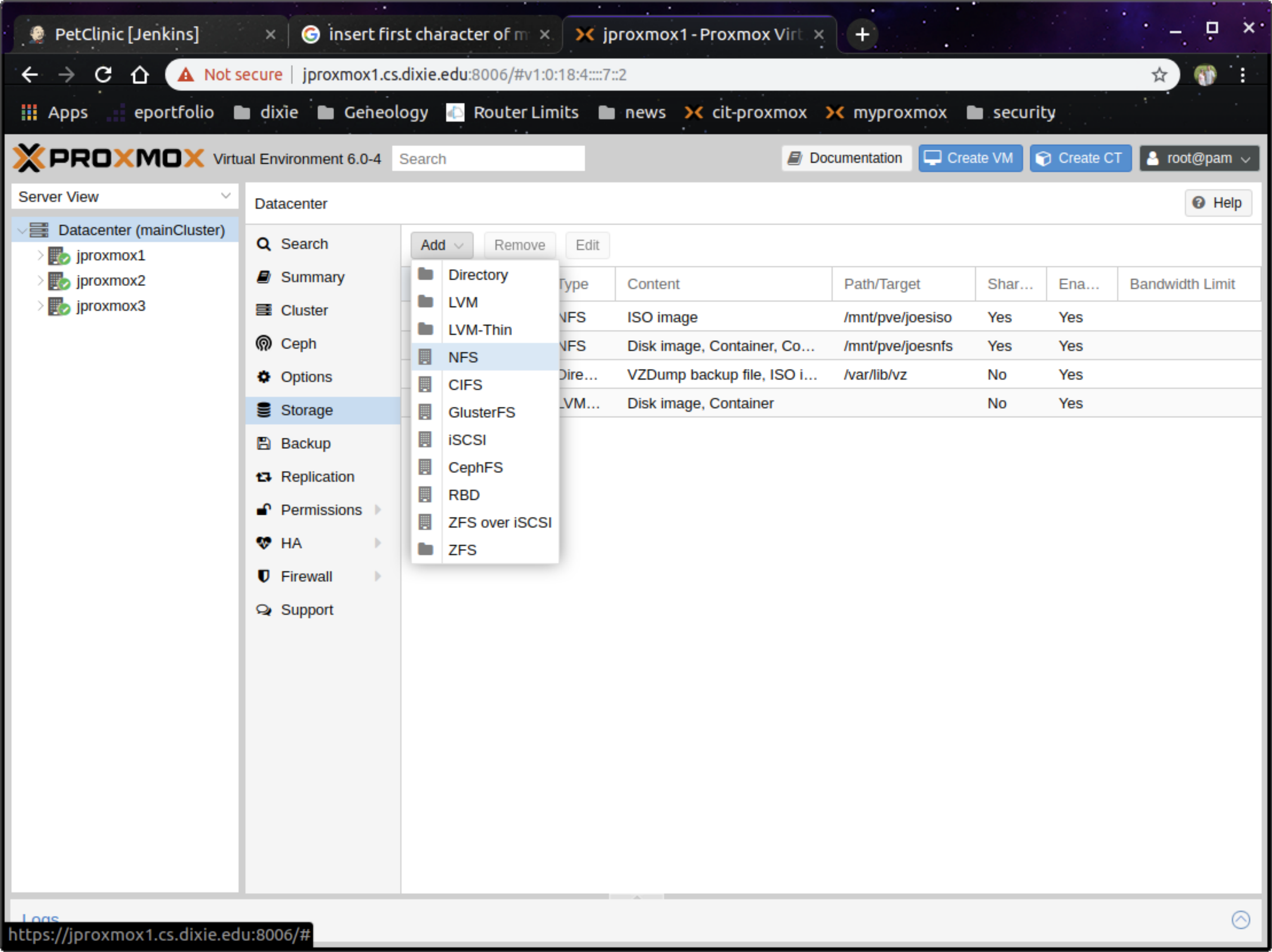
Not secure | jproxmox1.cs.dixie.edu:8006/?console=kvm&novnc=1&vmid=107&vmname=ubuntu-nfs&node=jproxmo...

```
joe@ubuntu-base:~$ sudo service nfs-kernel-server restart_
```



```
joe@ubuntu-base:~$ echo "now move to proxmox to see if you can connect. My  
interface is a little different"  
now move to proxmox to see if you can connect. My interface is a little dif  
ferent
```

```
joe@ubuntu-base:~$ □
```

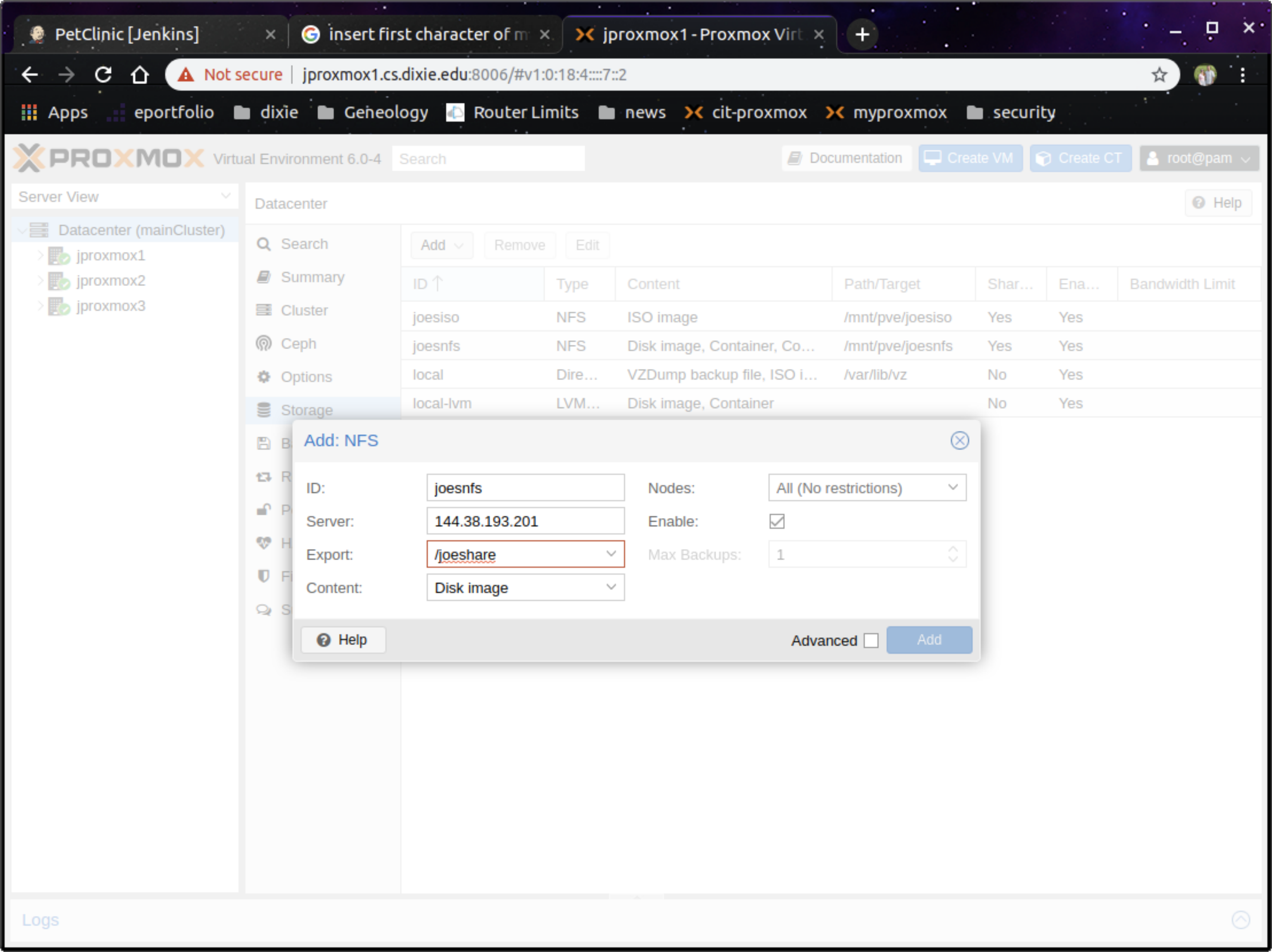


- Server View
- Datacenter (mainCluster)
 - jproxmox1
 - jproxmox2
 - jproxmox3

- Datacenter
 - Search
 - Summary
 - Cluster
 - Ceph
 - Options
 - Storage
 - Backup
 - Replication
 - Permissions
 - HA
 - Firewall
 - Support

- Add
 - Directory
 - LVM
 - LVM-Thin
 - NFS
 - CIFS
 - GlusterFS
 - iSCSI
 - CephFS
 - RBD
 - ZFS over iSCSI
 - ZFS

Type	Content	Path/Target	Shar...	Ena...	Bandwidth Limit
NFS	ISO image	/mnt/pve/joesiso	Yes	Yes	
NFS	Disk image, Container, Co...	/mnt/pve/joesnfs	Yes	Yes	
Dire...	VZDump backup file, ISO i...	/var/lib/vz	No	Yes	
LVM...	Disk image, Container		No	Yes	



Server View

- Datacenter (mainCluster)
 - jproxmox1
 - jproxmox2
 - jproxmox3

Datacenter

Search [Add] [Remove] [Edit]

ID ↑	Type	Content	Path/Target	Shar...	Ena...	Bandwidth Limit
joesiso	NFS	ISO image	/mnt/pve/joesiso	Yes	Yes	
joesnfs	NFS	Disk image, Container, Co...	/mnt/pve/joesnfs	Yes	Yes	
local	Dire...	VZDump backup file, ISO i...	/var/lib/vz	No	Yes	
local-lvm	LVM...	Disk image, Container		No	Yes	

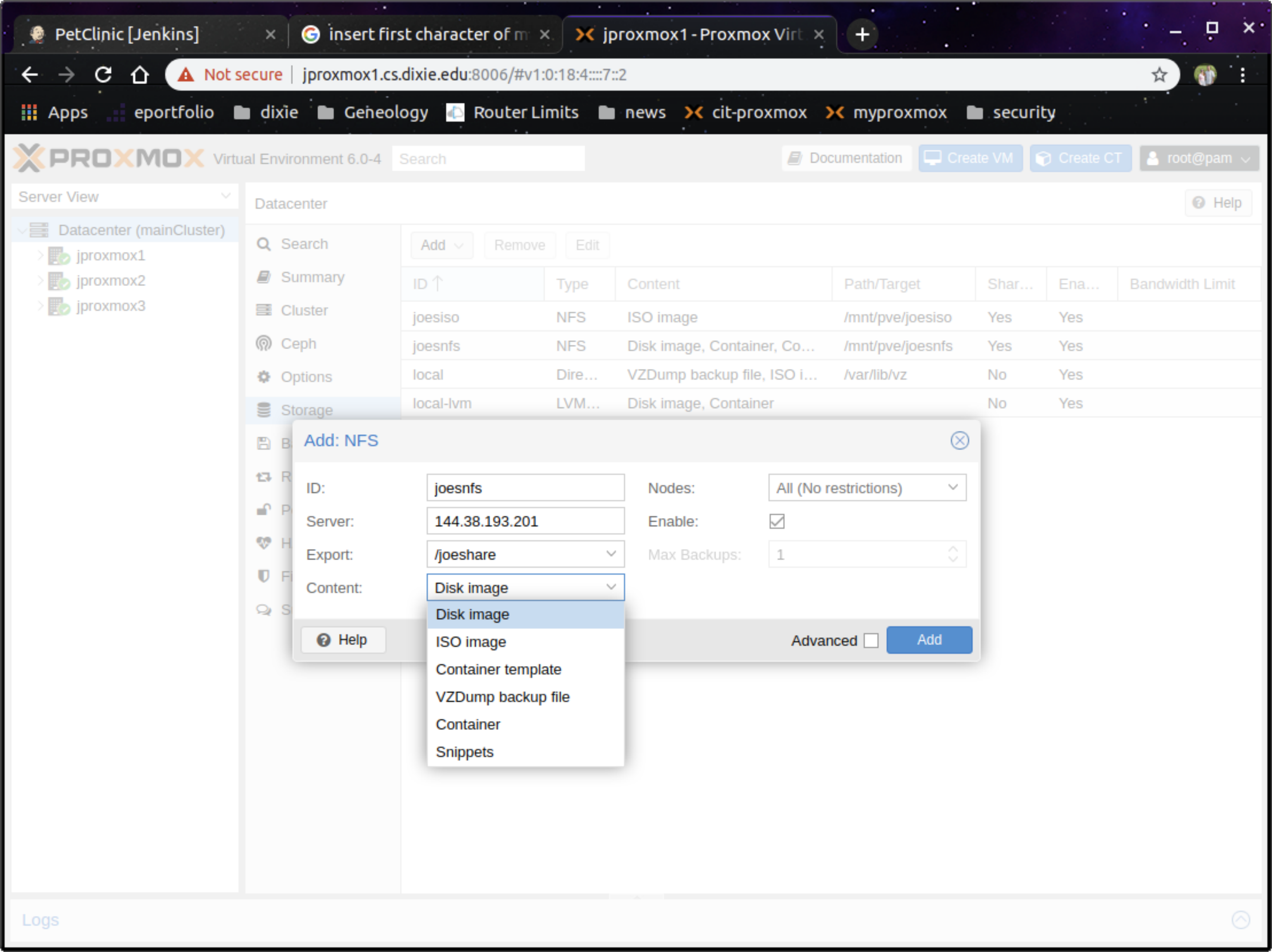
Add: NFS

ID: Nodes:

Server: Enable:

Export: Max Backups:

Content:



Server View

- Datacenter (mainCluster)
 - jproxmox1
 - jproxmox2
 - jproxmox3

Datacenter

Search Add Remove Edit

ID ↑	Type	Content	Path/Target	Shar...	Ena...	Bandwidth Limit
joesiso	NFS	ISO image	/mnt/pve/joesiso	Yes	Yes	
joesnfs	NFS	Disk image, Container, Co...	/mnt/pve/joesnfs	Yes	Yes	
local	Dire...	VZDump backup file, ISO i...	/var/lib/vz	No	Yes	
local-lvm	LVM...	Disk image, Container		No	Yes	

Add: NFS

ID: Nodes:

Server: Enable:

Export: Max Backups:

Content:

Help Advanced Add

- Disk image
- Disk image
- ISO image
- Container template
- VZDump backup file
- Container
- Snippets

Server View

- Datacenter (mainCluster)
 - jproxmox1
 - jproxmox2
 - jproxmox3

Datacenter Help

Search Add Remove Edit

ID ↑	Type	Content	Path/Target	Shar...	Ena...	Bandwidth Limit
joesiso	NFS	ISO image	/mnt/pve/joesiso	Yes	Yes	
joesnfs	NFS	Disk image, Container, Co...	/mnt/pve/joesnfs	Yes	Yes	
local	Dire...	VZDump backup file, ISO i...	/var/lib/vz	No	Yes	
local-lvm	LVM...	Disk image, Container		No	Yes	
nfsubuntu	NFS	Disk image	/mnt/pve/nfsub...	Yes	Yes	

Summary
Cluster
Ceph
Options
Storage
Backup
Replication
Permissions
HA
Firewall
Support


```
joe@ubuntu-base:~$ echo "Now create a vm using that share as storage"
```

```
Now create a vm using that share as storage
```

```
joe@ubuntu-base:~$ █
```

```
joe@ubuntu-base:~$ sudo ls /joeshare/images/106/
```

```
vm-106-disk-0.qcow2
```

```
joe@ubuntu-base:~$ echo "It created my disk image there. things look good"
```

```
It created my disk image there. things look good
```

```
joe@ubuntu-base:~$ █
```